

Innovating at the Edge Meetups

Operations Technology Solutions – Driving Industry 4.0

Dan Gilroy, Engineering Manager, Intel

The Intel logo is located in the bottom left corner of the slide. It consists of the word "intel" in a lowercase, white, sans-serif font, followed by a registered trademark symbol (®). The logo is positioned to the right of a decorative graphic of several overlapping squares in various shades of blue.

intel®

Notices and Disclaimers

- Intel technologies may require enabled hardware, software or service activation.
- No product or component can be absolutely secure.
- Your costs and results may vary.
- © Intel Corporation. Intel, the Intel logo, and other Intel marks are trademarks of Intel Corporation or its subsidiaries. Other names and brands may be claimed as the property of others.

Evolutionary History



Industry 1.0

- 1784
- Steam
- Industrial Loom



Industry 2.0

- 1870
- Electricity
- Assembly Line



Industry 3.0

- 1969
- First PLC
- Automation



Industry 4.0

- Today
- Connected Data
- AI Focused
- Human Machine Cooperation

Achieving Human Machine Cooperation



CONNECTIVITY



DATA & AI



SOFTWARE DEFINED
AUTONOMOUS
FACTORIES



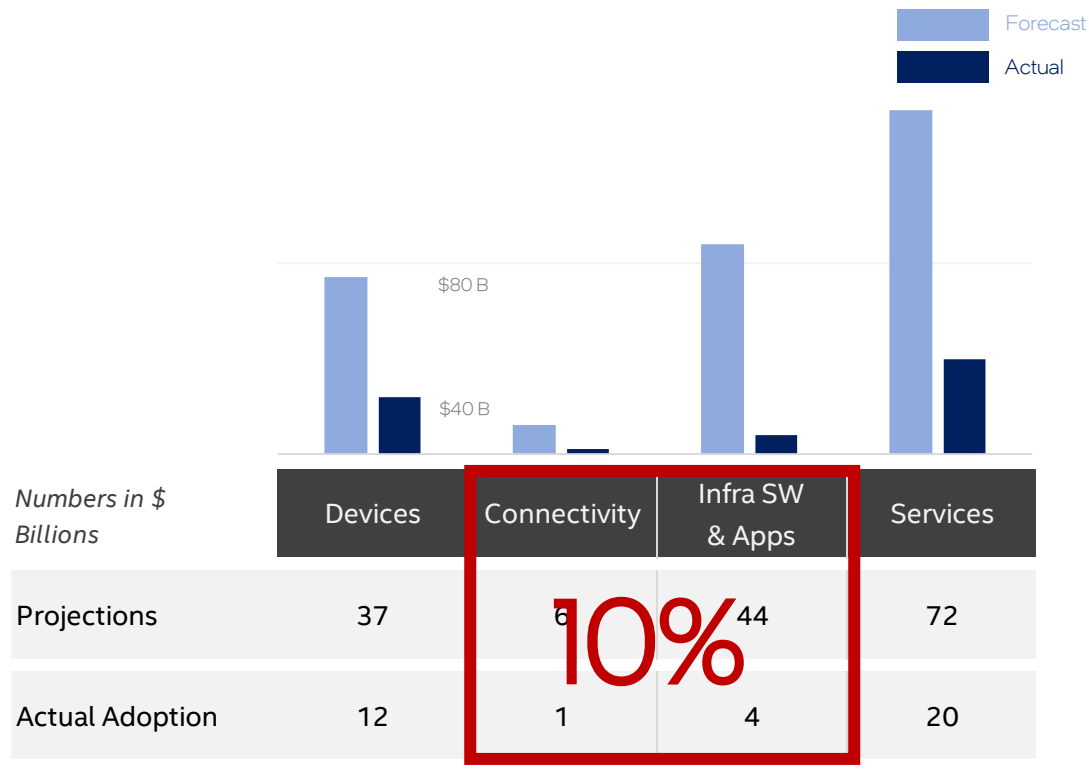
CONTROL



VIRTUALIZED
COMPUTE

Limited Industry Adoption ... So Far

Low Industry 4.0 Adoption: Projected vs Actual

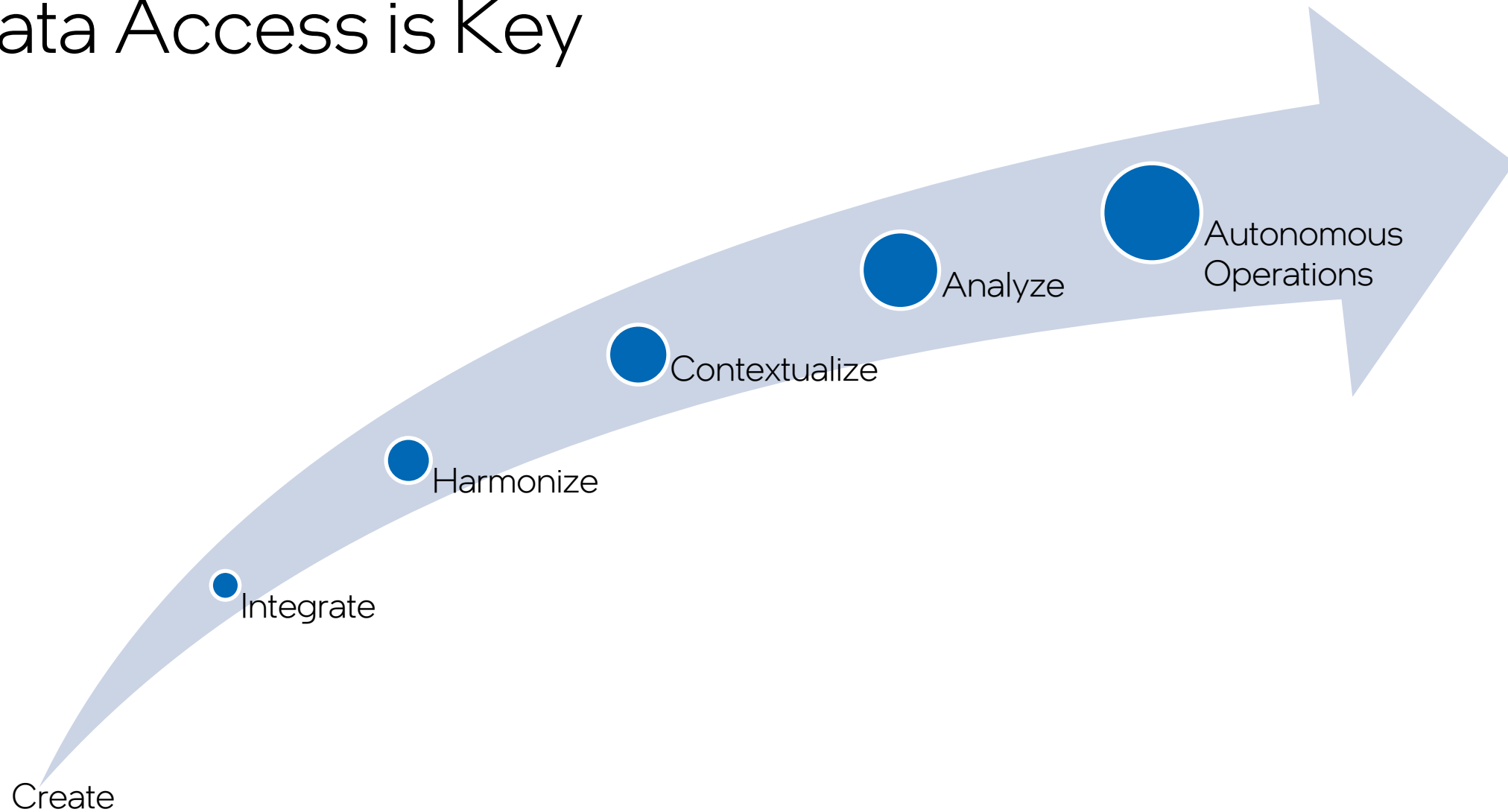


Source: How to win in IIoT connectivity – Mck Research

Bottlenecks

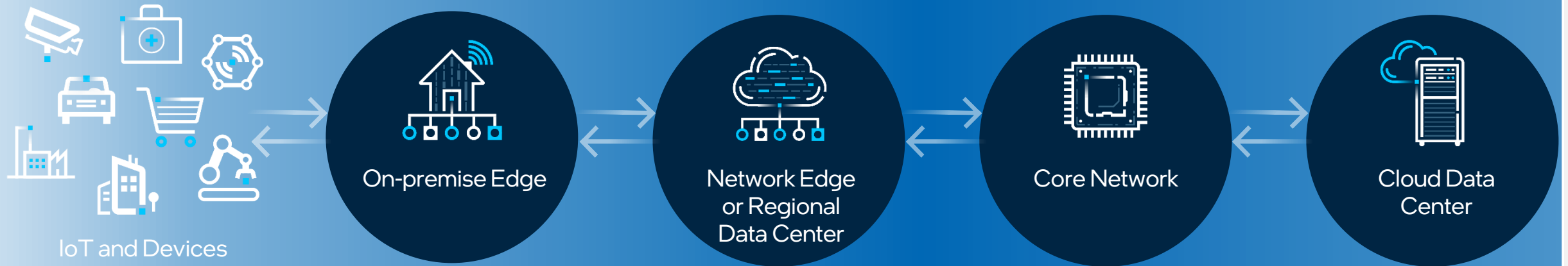
- Proprietary Systems
 - Low Incentive to change
 - Point Solutions
- Aging Infrastructure
 - Legacy Architecture
 - High Maintenance Costs
- Data Connectivity
 - Incompatible Protocols
 - No Platform Solutions
- Resource Scarcity

Data Access is Key



Intel® Smart Edge

Delivers compute where you need it

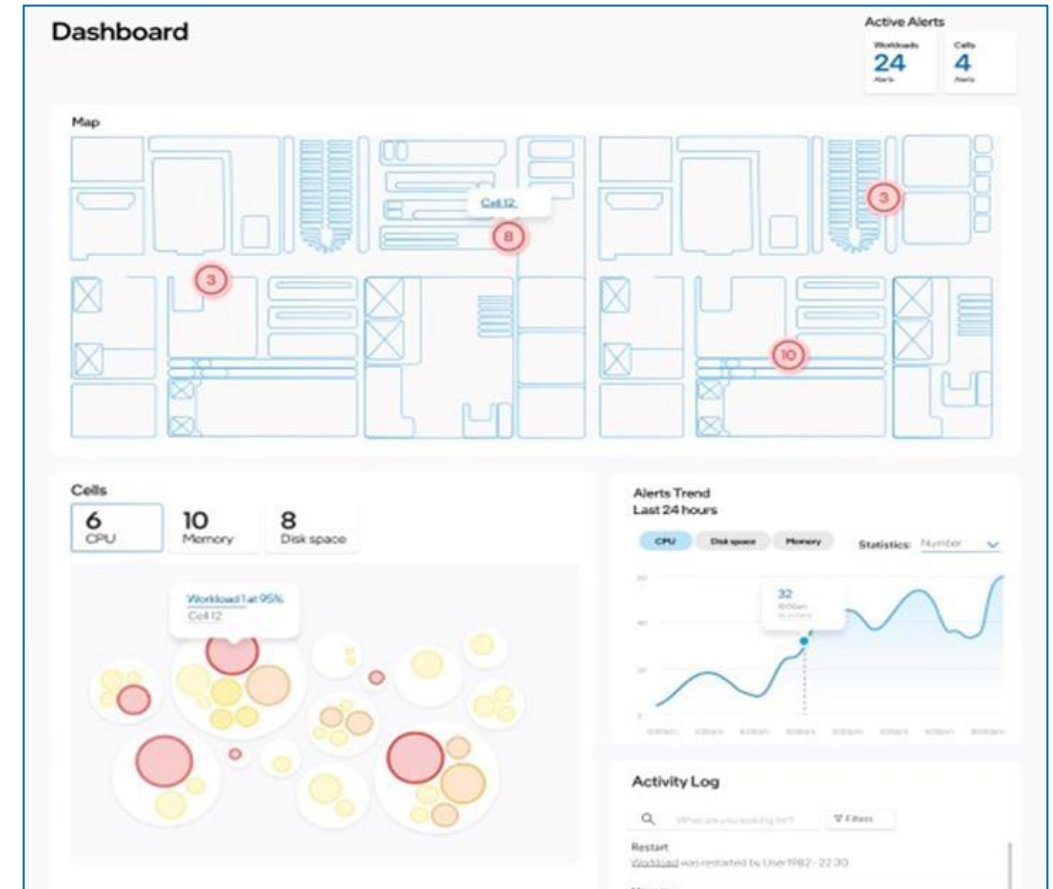


Edge Value Drivers

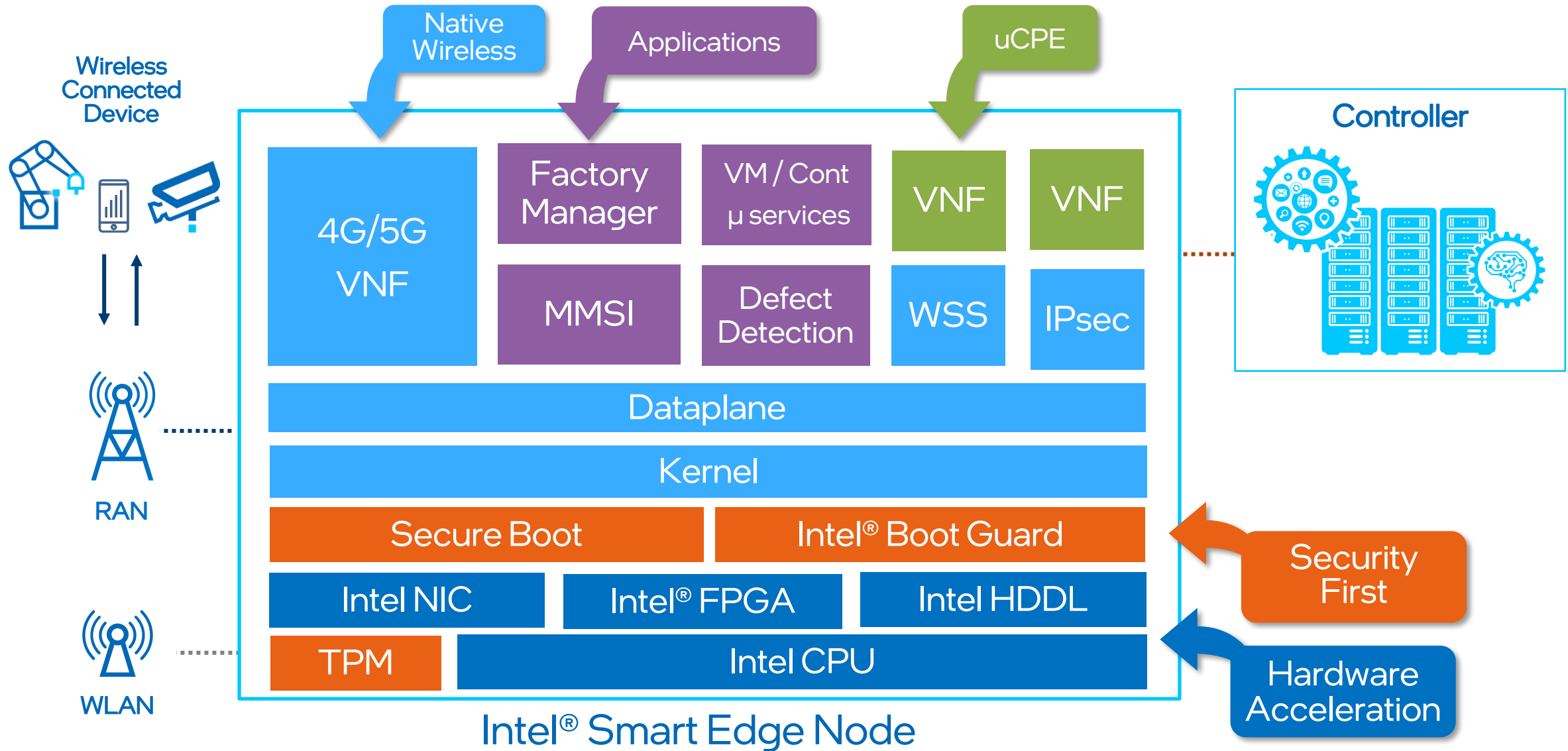
Latency
Bandwidth
Connectivity
Security
AI

Factory of the Future - Requirements

- Hyperconverged Workloads
- Zero Trust
- Flexibility – 5G Capability
- Data awareness
- Modern Application Architecture
- Simple Deployment
- Experience Driven – OT Focused

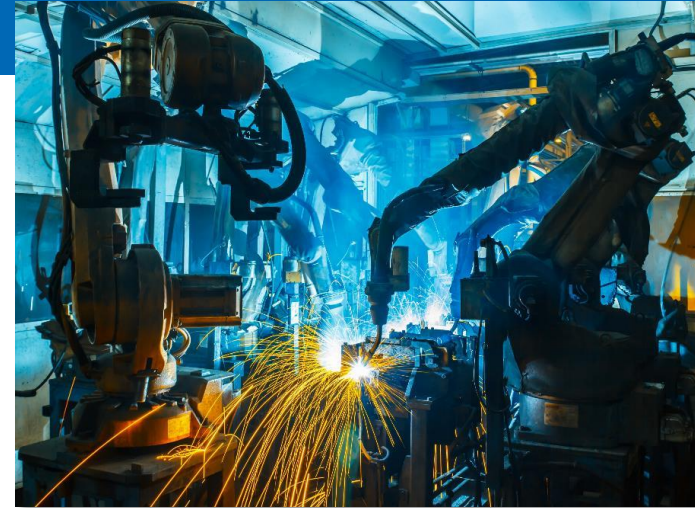


Architecture : Hyperconverged Industrial Edge

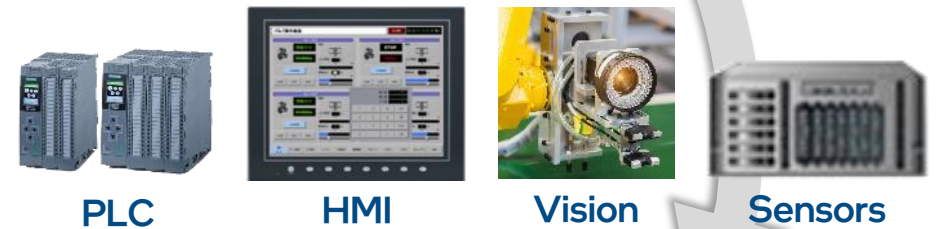


Hyper Converged

- Partnered with TT Tech Industrial
 - Virtualized PLC
 - HMI Hosting
- Leverage Intel Code
 - Sensor and Video Ingestion
- Micro Services
 - Enable System Extensibility
 - Platform Data Consumption



Many Custom Devices



Expandable, High-Performance Compute



Next Step - Enable Business Outcomes

- Real time data
 - Human/Machine Cooperation
 - Machine Vision
 - Digital Twin
 - Defect Detection
- OT/IT Integration
- Effective User Experience

Questions?

Dan Gilroy
dan.gilroy@intel.com

[Intel.com/SmartEdge](https://www.intel.com/SmartEdge)

intel®